

Category 14

Supervised Access

1. Access for Parents and Children in Ontario (APCO - Toronto Locations)
2. Canadian Training Institute: Breaking the Cycle

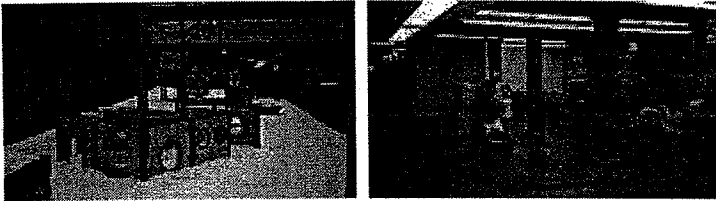
APCO: ACCESS FOR PARENTS AND CHILDREN IN ONTARIO
IS ONE OF THE LARGEST SUPERVISED ACCESS PROVIDERS IN ONTARIO

Locations Sites & Hours Of Operation

Hours of operation for all our locations, as of May 1, 2010, are as follows:

100 Sheppard Ave E.
Suite 504 TOR, ON
TEL: (416) 304-1221
FAX: (416) 304-0660

1) JESSE KETCHUM SITE (at Davenport & Bay)

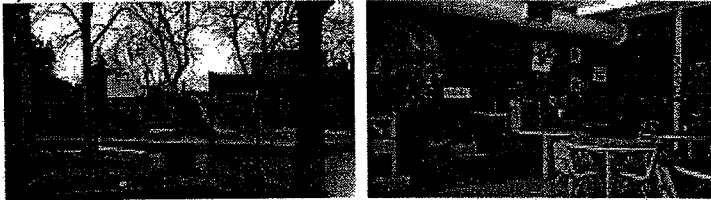


Hours of Operation:

Every Friday : From 6:30pm to 8:30pm
Every Saturday: From 9:00am to 4:00pm
Every Sunday : From 10:00am to 5:00pm

NOTE : In case of renovations at this site, clients will be transferred to the Danforth site.

2) DANFORTH SITE (Danforth & Greenwood)

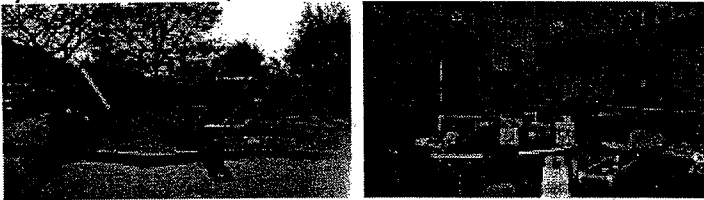


Hours of Operation:

Every Wednesday : From 6:30pm to 8:30pm
Every Saturday: From 9:00am to 4:00pm
Every Sunday : From 10:00am to 5:00pm

NOTE : In case of renovations at this site, clients will be transferred to the Blake site (at Pape & Danforth).

3) ALBION SITE (at Albion & Kipling)



Hours of Operation:

Alternate Sundays : From 10:00am to 5:00pm

NOTE : In case of renovations at this site, clients will be transferred to the Falstaff site.

4) SENECA SITE (at Don Mills & Finch)



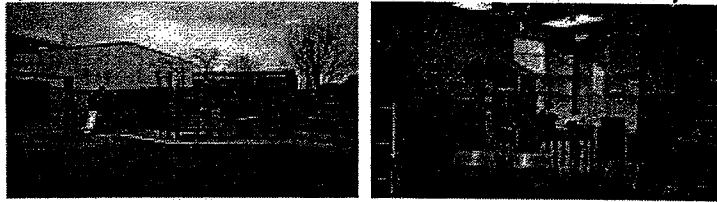
Hours of Operation:

Every Saturday : From 9:00am to 4:00pm

Every Sunday : From 10:00am to 5:00pm

NOTE : In case of renovations at this site, clients will be transferred to the Brahms site (at Don Mills & Finch).

5) O'CONNOR SITE (at Victoria Park & O'Connor)



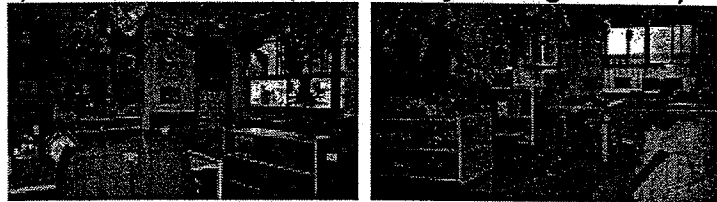
Hours of Operation:

Every Saturday: From 9:00am to 4:00pm

Every Sunday : From 10:00am to 5:00pm

NOTE: In case of renovations at this site, clients will be transferred to the Flemington site (at Don Mills & Eglinton).

6) GALLOWAY SITE (at Galloway & Kingston Rd.)

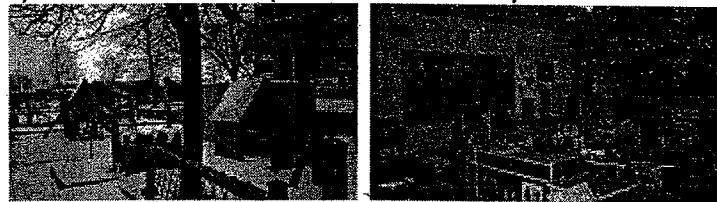


Hours of Operation:

Alternate Sundays : From 10:00am to 5:00pm

NOTE : In case of renovations at this site, clients will be transferred to the O Connor site.

7) FALSTAFF SITE (at Jane & Wilson)



Hours of Operation:

Every Saturday : From 9:00am to 4:00pm

Every Sunday: From 10:00am to 5:00pm

NOTE : In case of renovations at this site, clients will be transferred to the Albion site.

IMPORTANT NOTICE:

Please be advised that the health and safety of children is our main priority. If our program has deemed it necessary to cancel

visits due to severe weather condition or other emergency situations we will do so by recording/announcing changes on our voice mail system.

We kindly ask everyone that in emergency situations such as extreme cold or hot weather alerts, snow storms, regional power outages, public health and safety quarantines please call our main office and the access centre's cell phone prior to leaving your homes in order to find out whether visits have been cancelled by the program.

Please note that if visits are cancelled due to extreme weather conditions make-up visits will be offered. Arrangements for make-up visits must be discussed with the centre supervisor.

This is to confirm that our program will not offer any make-up visits for EASTER, SUMMER AND WINTER HOLIDAYS.

You are here: [Home](#) » [Family Law](#) » Supervised Access Centres

Supervised Access Centres

[Share](#)

Text size: [larger](#) | [smaller](#)

ALGOMA DISTRICT (Sault Ste. Marie, Elliot Lake)

Phone: (705) 945-5050 x2707 or 1-800-461-2237 | **Fax:** (705) 949-3873

Website: www.algomafamilyservices.org

Address: Supervised Access Coordinator
Supervised Access Program
875 Queen Street
Sault Ste. Marie, ON P6A 2B3

BRANT COUNTY (Brantford)

Phone: (519) 751-0466 | **Fax:** (519) 751-3365

Website: www.execulink.com/~bdsupacc/home.html

Address: Executive Director
Brantford and District Supervised Access Centre
82 Charlotte Street
Brantford, ON
N3T 2X1

BRUCE COUNTY (Walkerton, Wiarton)

Phone: (519) 371-5991 | **Fax:** (519) 371-6648

Address: Program Coordinator
Grey-Bruce Supervised Access Program
P.O. Box 395
365 14th Street West
Owen Sound, ON
N4K 5P7

COCHRANE (Timmins, Kapuskasing, Iroquois Falls)

Phone: (705) 360-2100 x5800 | **Fax:** (705) 360-7222

Website: www.timminschildfamily.org

Address: Supervised Access Coordinator
Child and Family Services for Timmins and District
707 Ross Avenue East
Timmins, ON
P4N 8R1

DUFFERIN COUNTY (Orangeville, Shelburne)

Phone: (519) 941-1530 x325 | **Fax:** (519) 941-1525

Website: www.dcafs.on.ca

Address: Supervised Access Coordinator
Dufferin Child and Family Services
655 Riddell Road
Orangeville, ON
L9W 4Z5

DURHAM REGIONAL MUNICIPALITY (Ajax, Oshawa North, Oshawa South, Pickering)

Phone: (905) 619-4565 x305 | **Fax:** (905) 619-4578

Address: Program Director
Durham Supervised Access Program
75 Centennial Drive
Ajax, ON
L1S 4S4

ELGIN COUNTY (Alymer, St.Thomas)

Phone: (519) 637-1667 | **Fax:** (519) 637-2230

Website: www.merrymount.on.ca

Address: Supervised Access Coordinator
Elgin County Supervised Access Centre
579 Talbot Street,
St. Thomas, ON
N5P 1C5

ESSEX COUNTY (Leamington, Windsor)**Phone:** (519) 252-7900 x135 | **Fax:** (519) 252-7901**Website:** www.glen Garda.on.ca**Address:** Supervised Access Coordinator
Windsor-Essex Supervised Access Program
3896 Connaught Street
Windsor, ON
N9C 2C1**FRONTENAC COUNTY (Kingston, Sharbot Lake)****Phone:** (613) 542-8533 | **Fax:** (613) 542-4094**Website:** www.kfla-supervisedaccess.com**Address:** Supervised Access Coordinator
The Supervised Access Program - Kingston/Napanee
816 Centennial Drive
Kingston ON
K7M 0A7**GREY COUNTY (Owen Sound)****Phone:** (519) 371-5991 | **Fax:** (519) 371-6648**Address:** Program Coordinator
Grey-Bruce Supervised Access Program
P.O. Box 395
365 14th Street West
Owen Sound, ON
N4K 5P7**HALDIMAND-NORFOLK (Simcoe, Caledonia)****Phone:** (519) 428-4838 x 32 | **Fax:** (519) 751-3365**Website:** www.execulink.com/~bdsupacc/home.html**Address:** Coordinator
Haldimand/Norfolk
Supervised Access
41 Kent Street
North Simcoe, ON
N3Y 2X7**HALIBURTON COUNTY (Haliburton)****Phone:** (705) 742-3803 x325 | **Fax:** (705) 743-4144**Website:** www.kinark.on.ca**Address:** Supervised Access Coordinator
Kawartha Pine Ridge Supervised Access Centre
380 Armour Road,
Suite 275
Peterborough, ON
K9H 7L7**HALTON REGIONAL MUNICIPALITY (Burlington, Milton)****Phone:** (905) 637-5256 | **Fax:** (905) 637-8221**Website:** www.burlingtoncounselling.com**Address:** Supervised Access Coordinator
Burlington Counselling and Family Services Family Visiting Program
460 Brant Street,
Suite 200
Burlington, ON
L7R 4B6**HAMILTON, CITY (Hamilton Downtown)****Phone:** (905) 522-9922 x139 | **Fax:** (905) 526-6527**Website:** www.ywcahamilton.org**Address:** Supervised Access Coordinator
The Supervised Access Centre for the City of Hamilton
75 MacNab Street South Hamilton, ON
L8P 3C1**HASTINGS COUNTY (Belleville, Bancroft)****Phone:** (613) 968-7362 | **Fax:** (613) 966-4542**Address:** Supervisor
Supervised Access Services for Hastings and Prince Edward Counties

11/12/2011 Supervised Access Centres - Ministry of the Attorney General
150 Dundas Street East
Belleville, ON
K8N 1C7

HURON COUNTY (Clinton, Exeter, Goderich)

Phone: (519) 508-6101 or 1 (888) 508-6101 | **Fax:** (519) 508-6102

Website: www.emilymurphycentre.com

Address: Supervised Access Coordinator
Supervised Access Program of Huron
The Emily Murphy Centre
413 Hibernia Street
Stratford, ON
N5A 5W2

KENORA (DISTRICT OF) (Kenora, Dryden, Sioux Lookout, Red Lake)

Phone: (807) 223-8550 or 1-800-465-7203 | **Fax:** (807) 223-2791

Address: Supervised Access Coordinator
Firefly
P.O. Box 760
75C Van Horne Avenue
Dryden, ON
P8N 2B2

KENT COUNTY (Blenheim, Chatham, Tilbury, Wallaceburg)

Phone: (519) 355-1127 | **Fax:** (519) 355-0948

Website: www.glengarda.on.ca

Address: Supervised Access Coordinator
Essex-Kent Supervised Access Program
444 Riverview Drive Unit 17
Chatham, ON
N7M 5J5

LAMBTON COUNTY (Sarnia)

Phone: (519) 336-0917 x255 | **Fax:** (519) 336-8517

Website: www.familycounsellingctr.com

Address: Supervised Access Coordinator
Sarnia-Lambton Supervised Access Program
1086 Modeland Road
Bldg. 1030, Second Floor
Sarnia, ON
N7S 6L2

LANARK COUNTY (Smith Falls)

Phone: (613) 284-1900 or 1-877-284-1947 | **Fax:** (613) 284-1905

Website: www.rosegardenfsc.ca

Address: Supervised Access Coordinator
Supervised Access Program
91 Cornelia Street West
Smiths Falls, ON
K7A 5L3

LEEDS AND GRENVILLE UNITED COUNTIES (Brockville)

Phone: (613) 345-6007 or 1-877-417-6007 | **Fax:** (613) 345-6560

Website: www.rosegardenfsc.ca

Address: Supervised Access Coordinator
The Rose Garden Family Support Centre
P.O. Box 430
333 California Avenue, Unit #18
Brockville, ON
K6V 5V6

LENNOX AND ADDINGTON COUNTY (Napanee)

Phone: (613) 542-8533 | **Fax:** (613) 542-4094

Website: www.kfla-supervisedaccess.com

Address: Supervised Access Coordinator
The Supervised Access Program - Kingston/Napanee
816 Centennial Drive
Kingston ON
K7M 0A7

MANITOULIN (Little Current, Mindemoya, Wikwemikong)**Phone:** (705) 377-6080 | **Fax:** (705) 377-6081**Address:** Supervised Access Coordinator
Manitoulin Supervised Access Centre
Box 152 - 6062 King Street
Mindemoya, ON
P0P 1S0**MIDDLESEX COUNTY (London)****Phone:** (519) 858-9905 | **Fax:** (519) 434-6851**Website:** www.merrymount.on.ca**Address:** Program Supervisor
Supervised Access Program
1064 Colborne Street
London, ON
N6A 4B3**MUSKOKA DISTRICT MUNICIPALITY (Bracebridge, Huntsville)****Phone:** (705) 526-1095 | **Fax:** (705) 526-1360**Website:** www.kinark.on.ca**Address:** Program Coordinator
Simcoe/Muskoka Supervised Access Centre
788 Yonge Street, Unit 3
Midland ON
L4R 2E6**NIAGARA REGIONAL MUNICIPALITY (Niagara North: St. Catharines, Niagara South: Niagara Falls, Welland)****Phone:** (905) 384-9551 x258 | **Fax:** (905) 384-9144**Website:** www.PathstoneMentalHealth.ca**Address:** Supervised Access Coordinator
S.V.E.N. (Supervised Visitation and Exchange Niagara)
1604 Merrittville Highway, R.R. #2
Welland, ON
L3B 5N5**NIPISSING DISTRICT (North Bay, Mattawa, Sturgeon Falls)****Phone:** (705) 472-0678 | **Fax:** (705) 472- 6519**Website:** www.crisiscentre-nb.on.ca**Address:** Supervised Access Coordinator
Nipissing Supervised Access Centre
1675 Cassells Street,
North Bay, ON
P1B 4C6**NORTHUMBERLAND COUNTY (Cobourg)****Phone:** (705) 742-3803 x325 | **Fax:** (705) 743-4144**Website:** www.kinark.on.ca**Address:** Supervised Access Coordinator
Kawartha Pine Ridge Supervised Access Centre
380 Armour Road,
Suite 275
Peterborough, ON
K9H 7L7**OTTAWA-CARLETON REGIONAL MUNICIPALITY (Ottawa)****Phone:** (613) 725-3601 x175 | **Fax:** (613) 725-5651**Address:** Supervised Access Coordinator
Child/Parent Supervised Access Program
312 Parkdale Avenue
Ottawa, ON
K1Y 4X5**OXFORD COUNTY (Tillsonburg, Woodstock)****Phone:** (519) 533-1379 | **Fax:** (519) 533-1794**Website:** www.merrymount.on.ca**Address:** Supervised Access Coordinator
Oxford County Supervised Access Centre
21 Market Street

Woodstock, ON
N4S 7Y3

PARRY SOUND (Parry Sound, South River)

Phone: (705) 386-0570 X224 or 1 (800) 563-4201 | **Fax:** (705) 386-0150

Address: Supervised Access Coordinator
Supervised Access Program
District of Parry Sound Social Services Administration Board
1 Beechwood Drive
Parry Sound ON P2A 1J2

PEEL REGIONAL MUNICIPALITY (Brampton, Mississauga)

Phone: (289) 470-5327 or 1-866-243-9925 x5327 | **Fax:** (905) 953-8241

Address: Supervised Access Coordinator
Peel Region Supervised Access Centre
c/o Social Enterprise for Canada
17705 Leslie Street
Unit 11
Newmarket, ON
L3Y 3E3

PERTH COUNTY (Stratford, Listowel)

Phone: (519) 508-6101 or 1 (888) 508-6101 | **Fax:** (519) 508-6102

Website: www.emilymurphycentre.com

Address: Supervised Access Coordinator
Supervised Access Program of Perth
The Emily Murphy Centre
413 Hibernia Street
Stratford, ON
N5A 5W2

PETERBOROUGH COUNTY (Peterborough)

Phone: (705) 742-3803 x325 | **Fax:** (705) 743-4144

Website: www.kinark.on.ca

Address: Supervised Access Coordinator
Kawartha Pine Ridge Supervised Access Centre
380 Armour Road,
Suite 275
Peterborough, ON
K9H 7L7

PRESCOTT AND RUSSELL UNITED COUNTIES (Hawkesbury)

Phone: (613) 632-2333 or 1-877-632-2332 | **Fax:** (613) 632-7880

Website: www.centreyorkcentre.ca

Address: Supervised Access Coordinator
Centre York Centre
290-C McGill Street
Hawkesbury, ON
K6A 1P8

PRINCE EDWARD COUNTY (Picton)

Phone: (613) 968-7362 | **Fax:** (613) 966-4542

Address: Supervisor
Supervised Access Services for Hastings and Prince Edward Counties
150 Dundas Street East
Belleville, ON
K8N 1C7

RAINY RIVER DISTRICT (Fort Frances, Atikokan)

Phone: (807) 274-0381 or 1 800 465-7764 | **Fax:** (807) 274-6646

Website: www.facsrr.ca

Address: Supervised Access Coordinator
Supervised Access Program
240 First Street East
Suite 200
Fort Frances, ON
P9A 1K5

RENFREW COUNTY (Pembroke, Renfrew)

Phone: (613) 735-1093 | **Fax:** (613) 735-6641

Address: Supervised Access Coordinator
Family and Children's Services of the County of Renfrew
464 Isabella Street
Pembroke, ON
K8A 5T9

SIMCOE COUNTY (Barrie, Midland, Orillia)

Phone: (705) 526-1095 | **Fax:** (705) 526-1360
Website: www.kinark.on.ca

Address: Program Coordinator
Simcoe/Muskoka Supervised Access Centre
788 Yonge Street, Unit 3
Midland ON
L4R 2E6

STORMONT, DUNDAS AND GLENGARRY UNITED COUNTIES (Cornwall)

Phone: (613) 933-1253 or 1 (888) 426-9177 | **Fax:** (613) 933-3405
Website: www.centreyorkcentre.ca

Address: Supervised Access Coordinator
Centre York Centre
26 Montreal Road
2nd Floor, Suite 200
Cornwall, ON
K6H 1B1

SUDBURY DISTRICT/ SUDBURY REGIONAL MUNICIPALITY (Espanola, Sudbury)

Phone: (705) 566-5866 ext. 2565 | **Fax:** (705) 222-6083

Address: Supervised Access Coordinator
Supervised Access Centre
62 Froid Road, Suite 100
Sudbury ON
P3C 4Z3

THUNDER BAY DISTRICT (Greenstone, Thunder Bay)

Phone: (807) 473-1350 | **Fax:** (807) 343-5061
Website: www.childrenscentre.ca

Address: Supervised Access Coordinator
Children's Centre Thunder Bay
283 Lisgar Street
Thunder Bay, ON
P7B 6G6

TIMISKAMING (Englehart, Kirkland Lake, North Cobalt, New Liskeard)

Phone: 1 (866) 229-5437 x284 or (705) 567-9201 x284 | **Fax:** (705) 568-8787

Address: Supervised Access Coordinator
Timiskaming Child and Family Services
6 Tweedsmuir Road
Kirkland Lake, ON
P2N 1H9

TORONTO METROPOLITAN MUNICIPALITY (Central Toronto, East York, Scarborough, Toronto Main, Etobicoke, North Etobicoke, North York)

Phone: (416) 304-1221 x 111 | **Fax:** (416) 304-0660
Website: www.accessforparentsandchildren.on.ca

Address: Program Director
Access for Parents and Children in Ontario
100 Sheppard Avenue East
Suite 504
North York ON M2N 6N5

VICTORIA COUNTY (Haliburton, Lindsay)

Phone: (705) 742-3803 x325 | **Fax:** (705) 743-4144
Website: www.kinark.on.ca

Address: Supervised Access Coordinator
Kawartha Pine Ridge Supervised Access Centre
380 Armour Road,
Suite 275
Peterborough, ON
K9H 7L7

WATERLOO REGIONAL MUNICIPALITY (Kitchener-Waterloo, Cambridge)

Phone: (519) 743-1460 x298 or 1 (800) 653-2256 x298 | **Fax:** (519) 740-8540

Website: www.lutherwood.ca

Address: Supervised Access Coordinator
Child and Parent Place
35 Dickson Street
Cambridge, ON N1R 7A6

WELLINGTON COUNTY (Guelph)

Phone: (519) 822-4141 ext. 1532 or 1-866-321-4141 x1532 | **Fax:** (519) 821-3755

Website: www.lutherwood.ca

Address: Supervised Access Coordinator
Child and Parent Place
30 Wyndham St. N.
Guelph, ON
N1H 4E5

YORK REGIONAL MUNICIPALITY (Aurora, Thornhill)

Phone: (289) 470-5309 or 1 (866) 243-9925 x 5309 | **Fax:** (905) 953-8241

Address: Supervised Access Coordinator
York Region Supervised Access Program
c/o Social Enterprise for Canada
17705 Leslie Street
Unit 11
Newmarket, ON
L3Y 3E3

MINISTRY OFFICE

Phone: (416) 212-2028 or 1-877-661-9977 | **Fax:** (416) 212-2032

E-mail: judy.newman@ontario.ca

Address: Judy Newman
Program Manager
700 Bay Street
3 rd Floor
Box 171
Toronto, ON
M5G 1Z6